



# CORAL ORGANIC WALL LIGHT

Designed and Handmade by Oliver Höglund & Ryan Roberts

Illuminate your space with the Coral Organic wall light, a refined and distinctive clear glass-blown element available in a frosted and clear finish meticulously crafted to enhance bathrooms, hallways, and kitchen areas. Every light is individually hand-blown, ensuring a one-of-a-kind organic form that creates enchanting shadow play across your walls. Tailor it to your preferences by selecting a wall plate finish of brass finish, matte black, matte white, medium bronze or steel finish and set the mood of your space with a choice of warm, warm white, or white LED temperatures. Meticulously hand-blown using premium Swedish clear glass, each piece carries the distinctiveness of SOKTAS Glass designs, promising an unparalleled and personalised lighting masterpiece that adds both elegance and character to your space.

Hand Made in Currumbin, Australia.



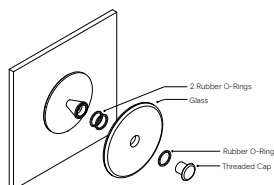
## TECHNICAL DATA

Application	Interior & Outdoor Use	Input Power	100-240V AC
Glass	Frosted / Clear	Output Power	4V DC Driver (350mA Constant Current) Supplied with Remote Driver
Cover Cap Finish	Matte Black / Matte White / Brass Finish / Steel Finish / Medium Bronze Powdercoat	Dedicated LED	1W - 350mA (Standard) / 2W (additional cost) Lifespan - 60,000+ Hours CRI>90
Wall Mount Finish	Matte Black / Matte White / Brass Finish / Steel Finish / Medium Bronze Powdercoat	Colour Temperature	2700K / 3000K (Standard) / 4000K
Glass Dimensions	180 - 220mm Wall Mount: 110 x 15mm Protrudes: 50mm	Dimming	Single-Use-1W LED Non-Dimmable (Standard) Optional: Single-use - 2W LED Triac Dimmable DALI Dimmable (additional cost) Please contact for alternative dimming options
IP Rating	IP65	Mounting	Integral Wall Bracket
Warranty	24 Months / 2 Years	Certification	CE / AS/NZS - 60598.2.1

## DIMENSIONS

## MOUNTING

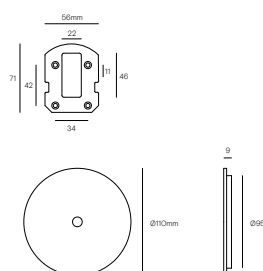
### Glass Installation



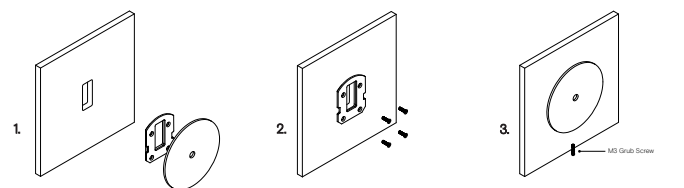
To install the glass piece, hold the glass against the LED housing and thread the 30mm threaded cap into the LED housing.

\*Ensure the rubber o-rings are installed in the correct position, with 2 behind the glass and 1 in front on the glass. If the glass is not held firmly when the threaded cap is fully screwed in, install an extra o-ring in front of the glass.

### Wall Plate Dimensions



### Installation Instructions



Prep the wall with a hole match the wall plate cutout. Secure the transformer into the wall cavity and feed the cable through the hole into the room. Connect the single electrified cable to the transformer.

\*The transformer needs to be accessible for maintenance purposes.

Screw the mounting plate to the wall using appropriate fasteners for the wall substrate.

Fit the circular wall plate over the mounting plate and secure with the supplied M3 grub screw at the bottom of the plate.